

Victor Hugo



Fun Pack



1. How long did he live in Guernsey?

.....

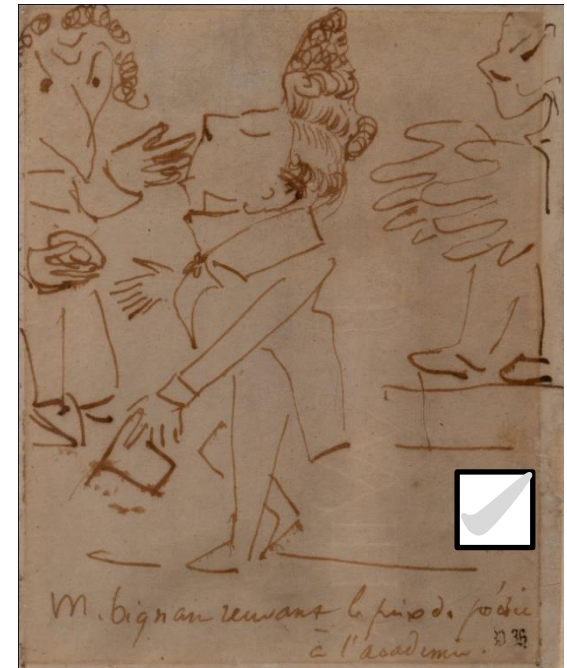
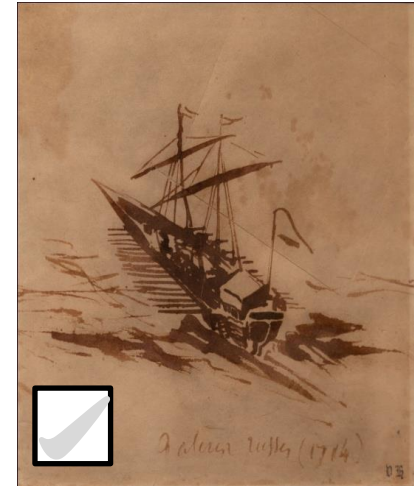
2. How many boats can you find on display?

.....

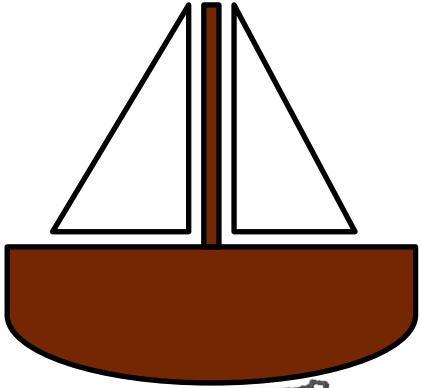
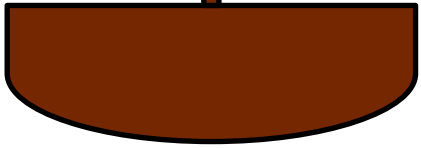
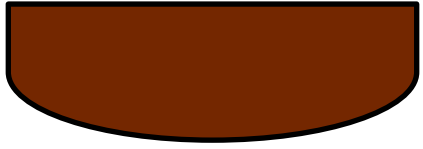
3. Can you name one of his books?

.....

SPOT IT



HOW TO DRAW
A BOAT...



NOW DRAW YOUR BOAT

In calm sea...

In rough sea...

On land...

Shipwrecked...

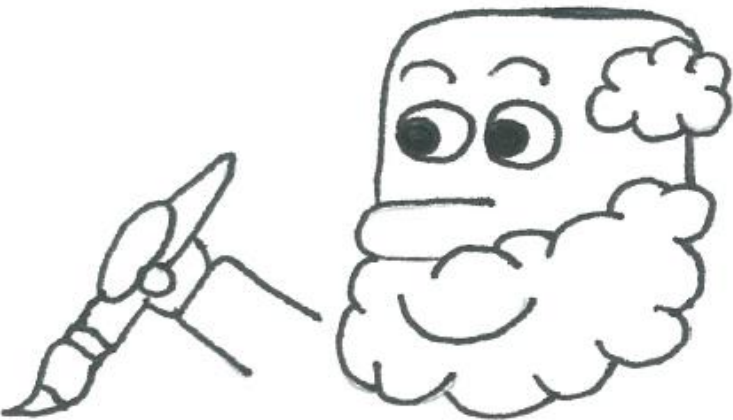
Does your boat have people? Does your boat have a cabin?
Does your boat have a patterned flag? Personalise your boat!

FILL IN THE FACE

Can you find the picture
with this frame?

Who is the person in the
picture?

- ☐ Hugo's wife
- ☐ Hugo's daughter
- ☐ Hugo's mother
- ☐ A random girl

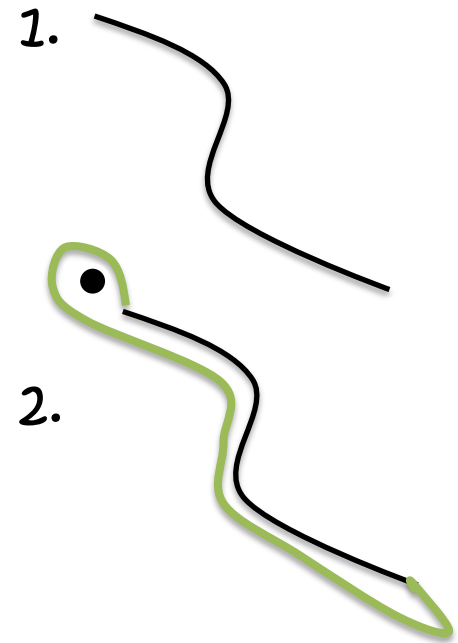


WHAT TO DO:

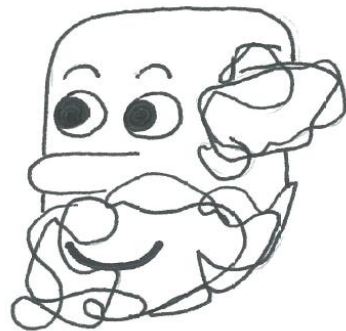
Draw a line without taking your pencil off of the page, go crazy!

Then try to make your line into a picture!

Example:



TAKE A LINE FOR A WALK

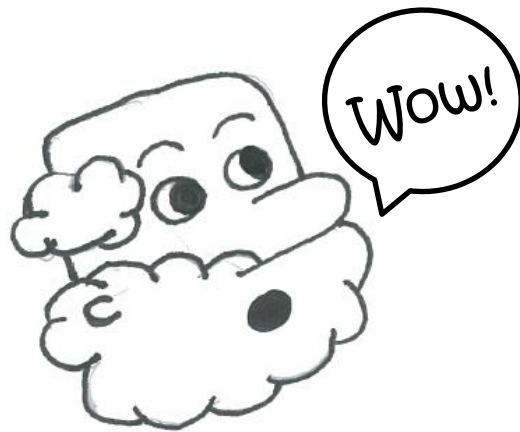


CAN YOU
FIND
VICTOR
HUGO'S
BELONGINGS
ON DISPLAY?

Examples...



WHAT'S YOUR FAVOURITE
BELONGING? DRAW IT ON THE
PILLAR



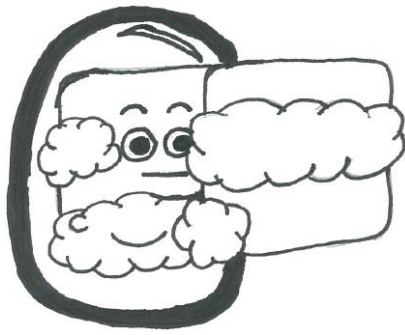
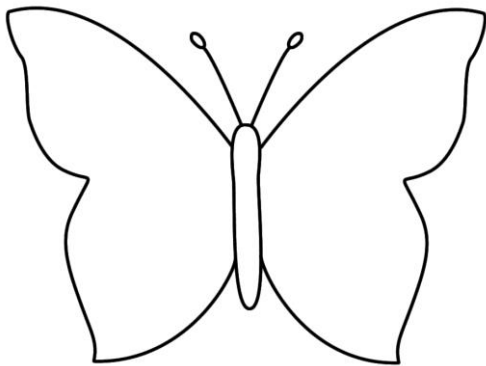
MIRRORS

- Anywhere on the page, you can draw half of a picture
- Then use your mirror to see what it would look like as a full picture...

without mirror...



with mirror...



Words to Find

❑ VICTOR HUGO

❑ LÉOPOLDINE

❑ FRANCE

❑ ARTIST

❑ EXILE

❑ LACE

❑ SPIRITS

❑ AUTHOR

❑ INITIALS

❑ STENCILS

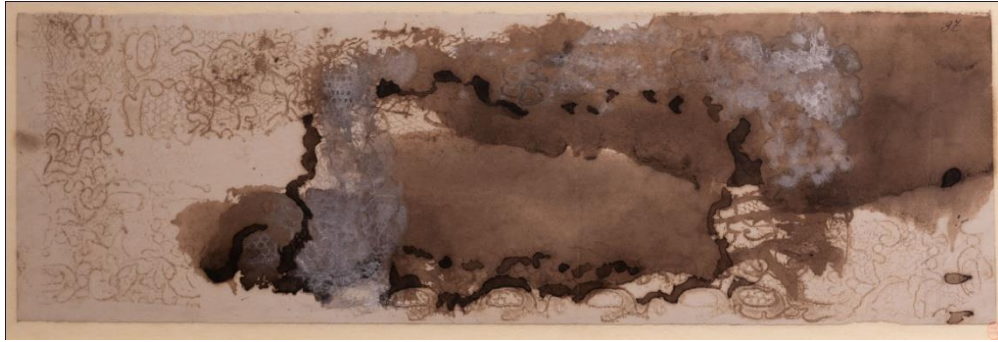
❑ ABSTRACT

❑ CARICATURES



A	B	S	T	R	A	C	T	D	R	F	G	C	D	S
I	L	A	Z	A	R	T	I	S	T	M	V	A	H	L
K	N	É	W	O	P	G	Z	P	V	J	I	R	D	I
A	P	Y	O	N	W	J	N	I	I	S	C	I	G	C
B	S	T	F	P	U	V	R	R	H	A	T	C	P	N
C	Z	R	X	A	O	H	O	I	U	F	O	A	I	E
I	D	G	I	H	L	L	M	T	F	N	R	T	O	T
N	F	J	E	S	D	K	D	S	V	O	H	U	Y	S
I	H	I	S	F	C	Q	R	I	Q	Z	U	R	É	T
T	E	C	N	A	R	F	A	R	N	E	G	E	G	U
I	X	W	T	B	G	R	U	X	T	E	O	S	B	Q
A	I	Y	E	S	B	W	T	S	L	A	B	K	Y	S
L	L	J	U	G	F	R	H	U	J	A	Y	N	T	O
S	E	L	É	C	X	E	O	F	G	I	C	P	M	L
R	X	A	W	B	Y	I	E	F	I	O	N	E	A	C

HAVE A GO AT HOME - PRINTING

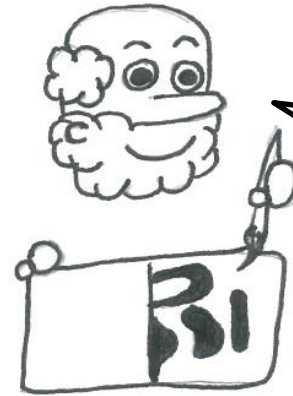


Victor Hugo sometimes used lace to print on some of his paintings!

- Ask a grown-up to cut a potato in half and carve the shape you want to print into the flat side of the potato halves.



- Then, dip your potato stamp into your paint. Make sure you have covered the whole shape!
- Press the stamp onto your paper.
- Lift up the stamp to see your picture! You can stamp the page as many times as you want



It looks great!



- Fold your paper in half so you know where the middle is.

- Next, paint half of your paper (one side of the fold line) however you want!

Note: It will be copied onto the other side

- Fold your paper in half again and press down so it will print onto the other side.

- Open the paper to see your finished picture!

