

£3,000
Wedding Package
CASTLE CORNET

The cost includes hire of the venue area and furniture, administration, cleaning and all staff costs at the event. Decorations are not provided.

GUESTS: 96 table seated for reception/ 150 standing after tables have been cleared

EVENT: Afternoon/Evening – between 2pm and Midnight.

Bar until 11:30pm.

Music until 11:45pm.

The cost allows for THREE days hire:

- 8am-5pm on the day before to set-up
- 8am-Midnight on the day
- 8am-5pm on the day after for clear-up

Access times for event companies and/or delivery of items are restricted during public opening hours, these must be pre-arranged with Visitor Services.

Food & Drink

Catering is supplied by our in-house caterers Sueco Outside Catering and they will provide a separate quotation. Tel: 01481 247736 or email: team@sueco.gg

Access

Please be aware the Castle has several steps and uneven surfaces, with no lift access.

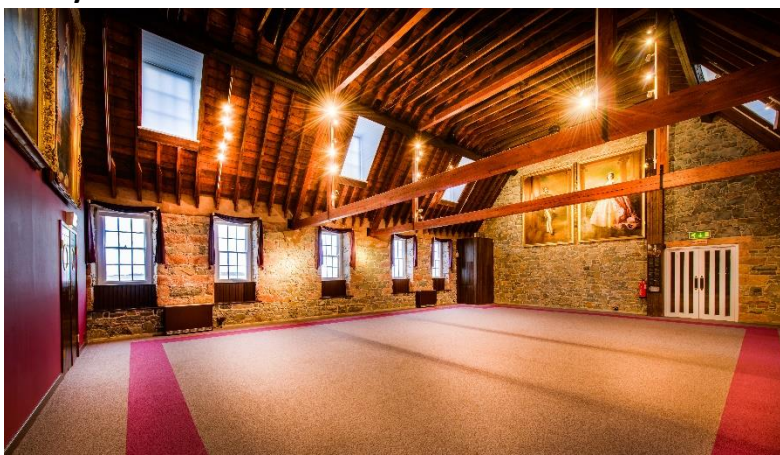
Castle Cornet operates as tourist attraction 7 days a week 10am – 5pm from February until the end of October. Outside areas cannot be completely closed off to the general public during daytime events.

Inside Area Options:

Indoor function room with additional use of the **Royal Battery** outside for drinks.

Guests seated on round tables or long banqueting tables, cleared for post-dinner festivities.

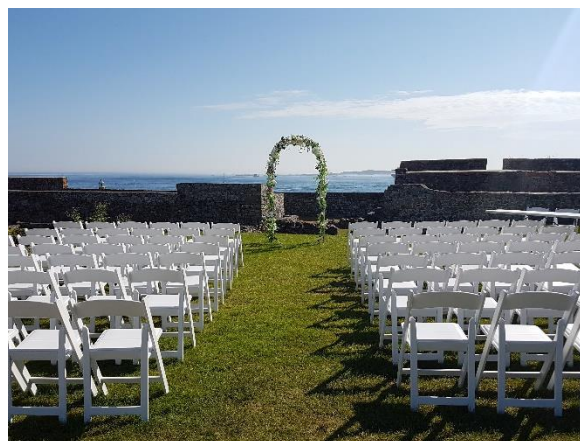
- **Hatton Gallery**



Outside Area Options:

Suitable for wedding blessings and drinks in fine weather.

- **South Battery ***
- **Top Lawn ***



*images are examples of possible set-ups and not specific offerings; only seating is supplied.